

FCR PERFECT CS **Plus**

Upgrade the version of the premium FCR series
with a sophisticated design



*Imaging Plate: HR-BD can be read on both sides with 50µm pixel size

FCR PRIMA **Tm**

High-speed image processing tabletop FCR with mammography compatibility



FCR PRIMA **T2**

Extremely fast processing in a compact body streamlines diagnosis



FCR CAPSULA **XLII**

Rapid processing and precise image reading ideal for X-ray images including mammograms





Brand new world's smallest class all-in-one tabletop CR equipped with Mammography Image reading as standard.

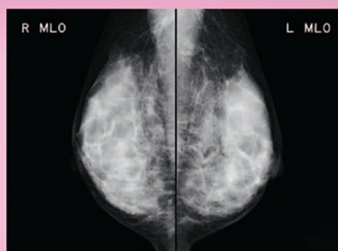
Compatible with multiple cassette sizes, covering a wide range of examination

Cassettes of any size can be read. This instrument is applicable to a variety of test settings, ranging from long-view imaging of the entire length of the vertebra or lower limbs to pantomography.



Realizing 50 μ m high-definition reading of mammography images

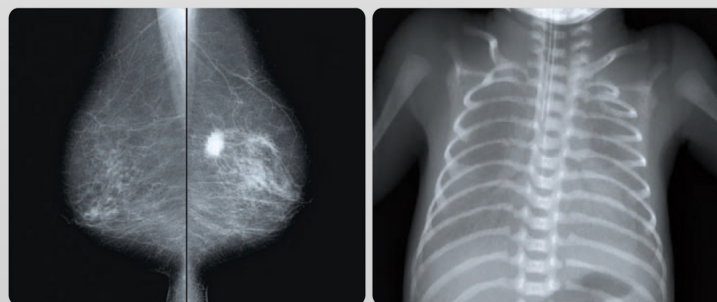
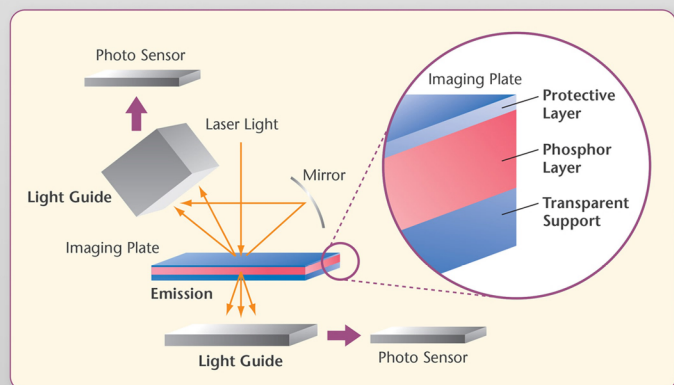
For the first time in the PRIMA series, the model is equipped with a mammography image reading function. With high definition reading and the fastest processing in the tabletop class, this model brings about a seamless workflow to your diagnosis.



FCR PROTECT CS Plus

Dual-Side Reading Technology

High-precision Images for Various Needs



The Dual-Side Imaging Plate (IP) Reading technology allows the use of a thicker phosphor layer on the transparent base, thereby increasing DQE (Detective Quantum Efficiency) by collecting the emissions from both sides of the IP.

As High DQE is realized by the FUJIFILM's Dual-side Reading Technology, with its low dose exposure, the FCR PROTECT CS Plus and the FCR PROTECT ONE Plus relieve patients' burden during X-ray examinations. Incorporated with the FUJIFILM proprietary image processing technology (Image Intelligence™), high resolution image reading with the 20 pixel/mm sampling pitch delivers excellent quality images in versatile diagnosis areas. For example, they are suitable for diagnosis areas requiring high-quality images even with low dose exposure, such as mammography, pediatrics, follow-ups and tests using a catheter.

FCR CAPSULA XLII

Compact with High Efficiency

FCR CAPSULA XLII enables extremely high throughput of up to approximately 94 IPs/hr.* and the time to display the image on the CR Console monitor is approximately 23 sec., in spite of its compactness.



Processing Capacity

94 IPs/hr.

* When a 35 × 35 cm (14" × 14") IP is read at 5 pixels/mm.

All-in-one unit for all diagnostic imaging needs

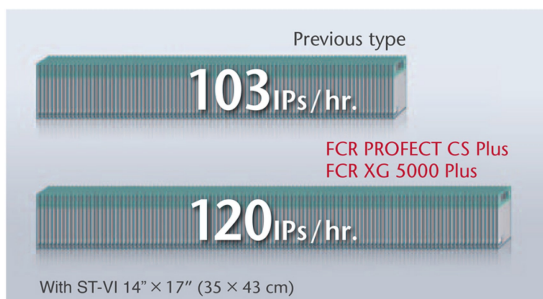
Three types of IP cassettes (Type CC, LC and CH**) can cover various imaging such as chest, lumbar spine, pantomography (15 × 30 cm), and extremities. Virtually all imaging requirements can be satisfied with the single unit.

** The optional 50-micron reading kit with HR-V or HR-VI necessary



The Fastest Processing Capacity in the world*

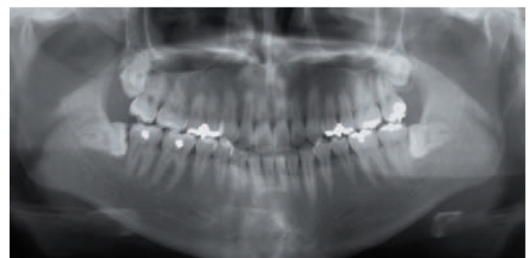
The FCR PROTECT CS Plus and FCR XG 5000 Plus have realized the world's fastest processing speed of 120 IPs/hr., a remarkable progress from the previous 103 IPs/hr. These two models reduce the examination time drastically, ensuring stress-free workflows.



* AS of end of August 2012 (according to Fujifilm's research)

A Multi-purpose FCR

The FCR Plus series now enables processing of pantomography exposures* (15 × 30 cm), in addition to standard and long-view exposures, making a wider range of examinations possible.



* 15 × 30 cm IP needs optional IP Adapter

FCR PROTECT CS Plus Specifications

Product Name	FCR PROTECT CS Plus (Model: CR-IR 363)
Processing Capacity by ST-VI 14" × 17" (35 × 43cm)	120 IPs/hr.
Time Required for IP Feed/Load by ST-VI 14" × 17" (35 × 43cm)	54 sec.
Time to Start on Display by ST-VI 14" × 17" (35 × 43cm)	37 sec.
Number of Stacker	4
Applicable Console	CONSOLE ADVANCE / MAMMOASCENT AWS-c
Main Connectable Imagers	DRYPIX Smart / DRYPIX EDGE
Network	10 BASE-T / 100 BASE-TX / 1000 BASE-T
Dimensions (W × D × H)	655 × 740 × 1480 mm (26" × 29" × 58")
Weight	270kg (595lbs.)
Power Supply Conditions	Single phase 50-60Hz AC120-240V ±10% 7~2.9A
Supplies	Imaging Plate: <ul style="list-style-type: none">• ST-VI (Standard type) 14" × 17" (35.4 × 43.0 cm), 14" × 14" (35.4 × 35.4 cm), 10" × 12" (25.7 × 30.5 cm), 8" × 10" (20.3 × 25.4 cm), 6" × 12" (15 × 30 cm)*, 9" × 12" (24 × 30 cm), 7" × 9" (18 × 24 cm)• HR-BD (Dual-side high-resolution type) 9" × 12" (24 × 30 cm), 7" × 9" (18 × 24 cm) IP Cassette: <ul style="list-style-type: none">• Type CC: 14" × 17" (35.4 × 43.0 cm), 14" × 14" (35.4 × 35.4cm), 10" × 12" (25.7 × 30.5cm), 8" × 10" (20.3 × 25.4 cm), 9" × 12" (24 × 30 cm), 7" × 9" (18 × 24 cm)• Type DM: 9" × 12" (24 × 30 cm), 7" × 9" (18 × 24 cm)• Type LC: 14" × 49" (35.4 × 124.5 cm), 14" × 40" (35.4 × 101.7 cm), 14" × 33" (35.4 × 83.0 cm), 10" × 23" (25.2 × 58.0 cm), 9" × 22" (24.0 × 57.0 cm) <div>* 6" × 12" (15 × 30 cm) IP needs optional IP Adapter</div>

FCR PRIMA Tm/T2 Specifications

Standard Components	FCR PRIMA Tm (Model: CR-IR 392)
Applicable Console	Prima, Console Advance
Main Connectable Imagers	DRYPIX PRIMA, DRYPIX 4000, DRYPIX 5000, DRYPIX 7000, DRYPIX Plus, DRYPIX Smart
Supplies	Imaging Plate ST-VI (standard type) 35 × 43 cm (14" × 17"), 35 × 35 cm (14" × 14"), 10" × 12", 8" × 10", 24 × 30 cm, 18 × 24 cm, 15 × 30 cm **HR-VI (high-resolution type) 24 × 30 cm, 18 × 24 cm IP Cassette Type CC 35 × 43 cm (14" × 17"), 35 × 35 cm (14" × 14"), 10" × 12", 8" × 10", 24 × 30 cm, 18 × 24 cm, 15 × 30 cm **Type CH 24 × 30 cm, 18 × 24 cm Type LC 35.4 × 124.5 cm, 35.4 × 101.7 cm, 35.4 × 83.0 cm, 25.2 × 58.0 cm, 24.0 × 57.0 cm
Time Required for IP Feed/Load	Min. 49 sec.

This equipment is a Class 1 laser product (IEC60825-1:2001).

Processing Capacity	**Up to 73 IPs/hr.
Reading Specification	10 pixels/mm, 5 pixels/mm, 20 pixels/mm
Time to Start on Display	Min. 33 sec.
Time to Print on DRYPIX Smart	Approx. 165 sec. (Approx. 155 sec.)* in case of 35 × 43 cm (14" × 17")
Number of Stacker	1
Network	10 Base T/100 Base TX
Dimensions (W × D × H)	560 × 540 × 392 mm (22" × 21" × 15")
Weight	39 kg (86 lbs.)
Power Supply Conditions	Single phase 50-60 Hz AC120-240V ±10% 1.9A (max)
Environmental Conditions	Operating Conditions: <ul style="list-style-type: none">• Temperature: 15-30 °C• Humidity: 15-80%RH (No dew condensation)• Atmospheric pressure: 750-1060 hPa

*In the high speed mode
**Only for prima Tm

FCR CAPSULA XL II Specifications

Standard Components	FCR CAPSULA XLII Image Reader Unit (Model: CR-IR 359) AC power cord
Other System Components	Optional upgrade kit for 50-micron reading with HR-V or HR-VI IP cassette type CC, LC, CH CR Console, CONSOLE ADVANCE*, AWS-c Dry Imager: DRYPIX 2000, 4000, 7000
Supplies	Imaging Plate: <ul style="list-style-type: none">• ST-VI: 35 × 43cm (14"× 17"), 35 × 35cm (14"× 14"), 10"× 12", 8"× 10", 24 × 30cm, 18 × 24cm, 15 × 30cm• HR-V: 24 × 30cm**, 18 × 24cm***• HR-VI: 24 × 30cm**, 18 × 24cm*** IP Cassette: <ul style="list-style-type: none">• Type CC: 35 × 43cm (14"× 17"), 35 × 35cm (14"× 14"), 10"× 12", 8"× 10", 24 × 30cm, 18 × 24cm, 15 × 30cm• Type LC: 35.4 × 124.5cm, 35.4 × 101.7 cm, 35.4 × 83.7 cm, 25.2 × 58 cm, 24 × 57 cm• Type CH: 24 × 30cm**, 18 × 24cm*** (For 50-micron reading with HR-V or HR-VI)

Number of Stacker	1
Reading Gray Scale	12 bits
Network	10 Base T/100 Base TX
Dimensions (W × D × H)	590 × 380 × 810mm (23"× 15"× 32")
Weight	99kg (218lbs.)
Power Supply Conditions	Single phase 50-60Hz AC120-240V ±10% 5A (max)
Environmental Conditions	Operating Conditions: <ul style="list-style-type: none">• Temperature: 15-30 °C• Humidity: 40-80%RH (No dew condensation) Non-operating Conditions: <ul style="list-style-type: none">• Temperature: 0-45°C• Humidity: 10-90%RH (No dew condensation)

FUJIFILM PAKISTAN (PVT) LTD.

info@fujifilm.com.pk
www.fujifilm.com.pk

Karachi: 021-34535502-5
Hyderabad: 022-2787277
Sukkur: 071-5628211

Lahore: 042-37237704-5 / 37358496
Faisalabad: 041-8548153
Multan: 061-4543472 / 4545106

Rawalpindi: 051-5130296-98
Sargodha: 048-3768410
Sahiwal: 0404-226375

Peshawar: 091-5278911 / 5261394
Rahim Yar Khan: 068-5877151
Gujranwala: 055-3856479

Quetta: 0312-3482036
Gujrat: 053-3515415
Swat: 0946-721433