

SKANMOBILE

High Frequency

Mobile Radiography System



RADIOLOGY



MONITORING



CARDIOLOGY



ANAESTHESIA



VENTILATION



DENTAL



SURGERY



TELE SOLUTIONS



VETERINARY

MADE IN ITALY

SKANMOBILE

SKANMOBILE is a light weight mobile unit powered with 4 kW, 100 mA, 250 mAs High Frequency Generator for high quality X-Ray imaging.

Advanced Technology for High Performance

SKANMOBILE has an integrated Tube Head working on a DSP based dual processor computation mode for “on the fly” control. The 200 kHz switching combined with sub-micro second error correction rate ensures highly stable X-Rays. The Anatomical Programmed Radiography (APR) feature with two step manual mode makes operation intuitive and simple.

Seamless Mobility

SKANMOBILE is an ultra lightweight mobile X-Ray unit perfectly balanced to move around anywhere in the hospital; through a ramp or in the lift. The stability is ensured through a unique design and a well balanced tube-head. The ergonomically designed Skanmobile can be positioned to suit different bed heights. The vertical and horizontal swing of the tube-head enables X-Ray of any anatomy within limited space.

DC Technology for Affordable X-Ray Systems

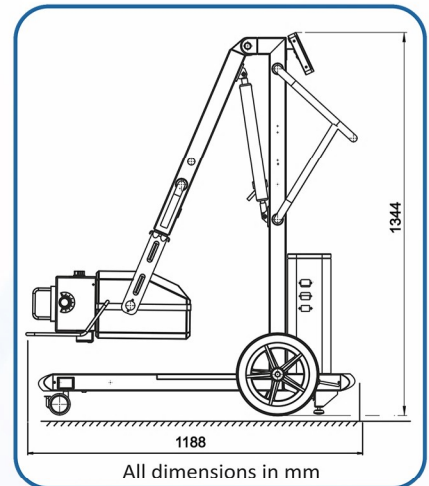
SKANMOBILE draws clean power from the mains. It consumes negligible power in stand-by mode and conserves energy during operational mode. The Green Mode Universal Power Source enables consistent image quality while operating from 230 V, 16 A, single phase AC power source (110 V model also available on special request).

Patented Safety Technologies

The unique **SkanSHIELD®** technology results in virtually zero-leakage radiation ensuring both patient and clinician are not exposed to unnecessary radiation. Skanray's **SkanSAFE®** technology enables precise digital control for X-Ray generation and thus eliminates soft radiation. The precisely controlled collimator ensures accurate focusing of X-Ray beam on the required area closely matching with the light field. The fail-safe secondary locking mechanism ensures that the horizontal arm is doubly protected against accidental overloading or mishandling.

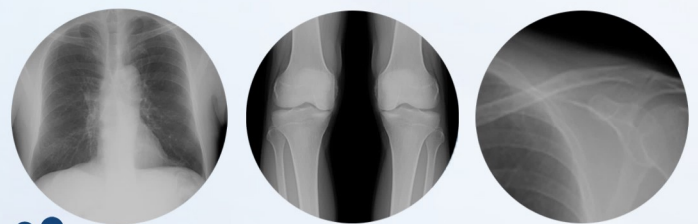
Mobile X-Ray unit Technical Specifications

Generator: DSP controlled, High Frequency, 4 kW
Input voltage: 230/110V Single Phase AC, 50/60 Hz
KV range: 40 kV to 100 kV in steps of 1 kV
mA range: 10 mA to 100 mA
mAs range: 0.1 mAs to 250 mAs
Exposure time: 10 msec to 5 sec
Indicators and controls: Set kV & Set mAs, Exposure ready & Fault
X-Ray tube: Stationary anode type
Focal spot: 1.8 IEC 60336
Maximum X-Ray field: 480 mm x 480 mm at 1 m from focal spot
Leakage radiation: <50 mR/hr at 1 m from focal spot
Trolley arm extension: 23° to 139° vertical
Tube head vertical rotation: < 290°
Tube head horizontal rotation: 360°
Collimator rotation: -90° to +90°
Total weight of the **SKANMOBILE**: 83kgs Maximum



Applications

- ✓ Neo-Natal ICU
- ✓ Adult ICU
- ✓ Emergency
- ✓ Operation Theatre
- ✓ Wards
- ✓ Rural Clinics
- ✓ Mobile Health Camps
- ✓ Ambulance (On request)
- ✓ Military



FUJIFILM PAKISTAN (PVT) LTD.

info@fujifilm.com.pk
www.fujifilm.com.pk

Karachi: 021-34535502-5
Hyderabad: 022-2787277
Sukkur: 071-5628211

Lahore: 042-37237704-5 / 37358496
Faisalabad: 041-8548153
Multan: 061-4543472 / 4545106

Rawalpindi: 051-5130296-98
Sargodha: 048-3768410
Sahiwal: 0404-226375

Peshawar: 091-5278911 / 5261394
Rahim Yar Khan: 068-5877151
Gujranwala: 055-3856479

Quetta: 0312-3482036
Gujrat: 053-3515415
Swat: 0946-721433